



REGIONAL SPECIALISED METEOROLOGICAL CENTRE -TROPICAL CYCLONES, NEW DELHI TROPICAL WEATHER OUTLOOK

DEMS-RSMC TROPICAL CYCLONES NEW DELHI DATED 28.07.2025

TROPICAL WEATHER OUTLOOK FOR THE NORTH INDIAN OCEAN (THE BAY OF BENGAL OF BENGAL AND THE ARABIAN SEA) VALID FOR THE NEXT 168 HOURS ISSUED AT 0600 UTC OF 28.07.2025 BASED ON 0300 UTC OF 28.07.2025.

LAND:

Sub: Low pressure area over northwest Madhya Pradesh & adjoining east Rajasthan

Yesterday's **Well marked low pressure area** over northwest Madhya Pradesh and neighbourhood moved nearly westwards across Madhya Pradesh and weakened into a **low pressure area** over northwest Madhya Pradesh & adjoining east Rajasthan at 0000 UTC and persisted over the same region at 0300 UTC of today, the 28th July. The associated cyclonic circulation extended upto 5.8 km above mean sea level tilting southwestwards with height.

As per INSAT 3D Imagery, scattered to broken low and medium clouds with embedded intense to very intense convection lay over south Rajasthan adjoining west Madhya Pradesh and north Gujarat (minimum Cloud Top Temperature -70°C to -90°C) and moderate to intense convection over north Rajasthan, northwest Madhya Pradesh and southwest Uttar Pradesh (minimum Cloud Top Temperature -40°C to -50°C) .

BAY OF BENGAL:

Scattered to broken low and medium clouds with embedded intense to very intense convection lay over north Bay of Bengal, north Andaman Sea, Arakan coast, Gulf of Martaban and Tennaserim coast. Scattered low and medium clouds with embedded moderate to intense convection lay over the eastcentral & southeast Bay of Bengal and south Andaman Sea. Isolated weak to moderate convection lay over westcentral & southwest Bay of Bengal.

***PROBABILITY OF CYCLOGENESIS (FORMATION OF DEPRESSION) DURING NEXT 168 HRS:**

24 HOURS	24-48 HOURS	48-72 HOURS	72-96 HOURS	96-120 HOURS	120-144 HOURS	144-168 HOURS
NIL	NIL	NIL	NIL	NIL	NIL	NIL

***NOTE: EVERY 24HR FORECAST IS VALID UPTO 0300 UTC (0830 IST) OF NEXT DAY**

ARABIAN SEA:

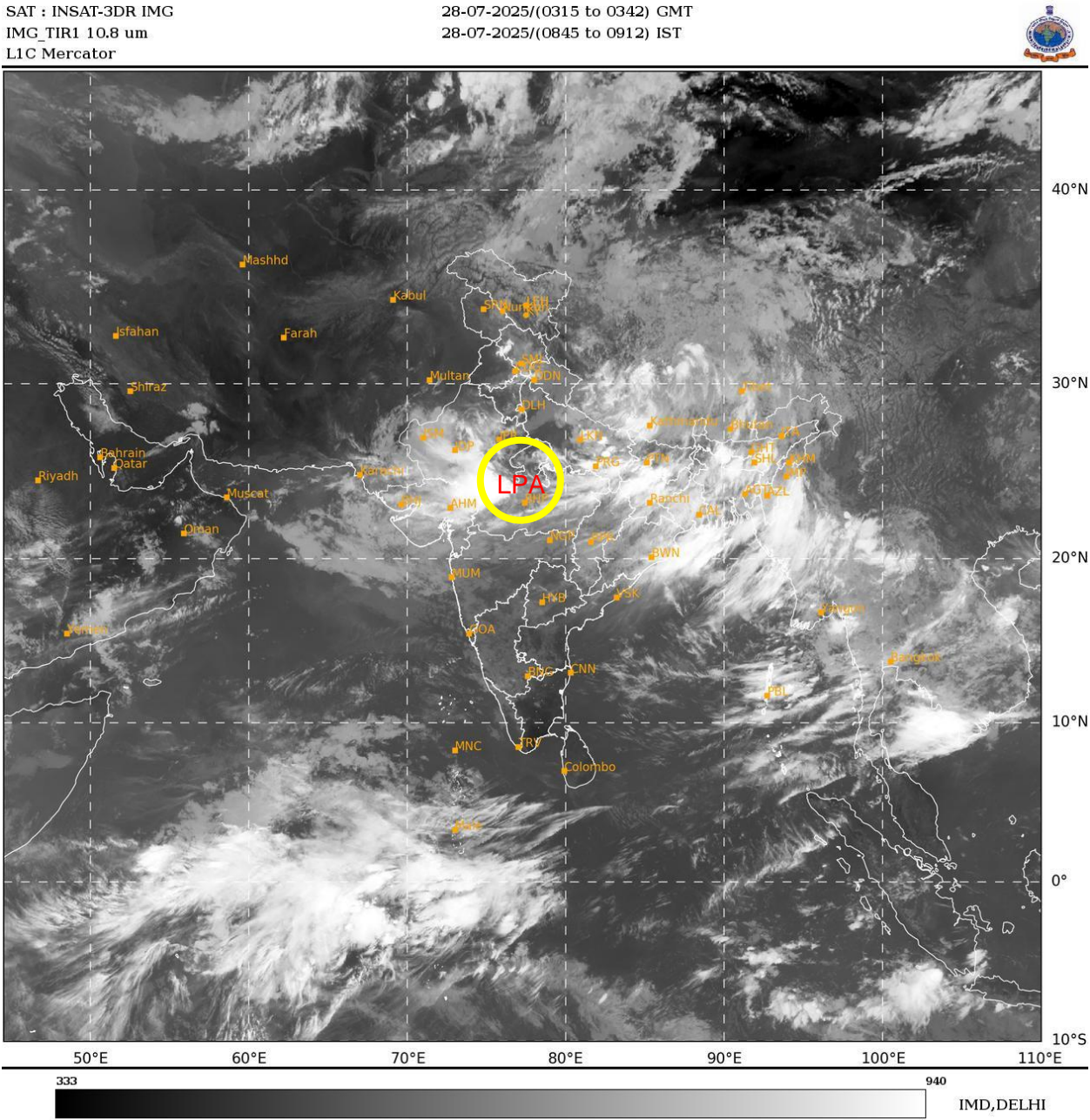
Scattered low and medium clouds with embedded moderate to intense convection lay over south Arabian Sea and Maldives area. Scattered low and medium clouds with embedded weak to moderate convection lay over north & central Arabian Sea, Gulf of Kutch, Gulf of Cambay and Lakshadweep Islands area.

***PROBABILITY OF CYCLOGENESIS (FORMATION OF DEPRESSION) DURING NEXT 168 HRS:**

24 HOURS	24-48 HOURS	48-72 HOURS	72-96 HOURS	96-120 HOURS	120-144 HOURS	144-168 HOURS
NIL	NIL	NIL	NIL	NIL	NIL	NIL

***NOTE: EVERY 24HR FORECAST IS VALID UPTO 0300 UTC (0830 IST) OF NEXT DAY**

REMARKS: NIL



LPA: Low pressure area